

Tā Hāmi rāua ko Rere

KAEWA
WAIWAI
WHAKAMIHARO



Nā Sally Smith Nā Emma Scheltema ngā pikitia

Watercare
An Auckland Council Organisation





Tā Hāmi rāua ko Rere

Nau mai ki tēnei putanga pānui tahi
mō te Tā Hāmi rāua ko Rere Kaewa
Waiwai Whakamiharo.



Pāwhirihia ngā pātene
Pānui-Tahi kia pānui tahi
ai tāua.



Ka pārekareka hoki koe ki
te kimi i ngā mea huna ki
roto i te pukapuka nei.

KAEWA
WAIWAI
WHAKAMIHARO



Nā Sally Smith

Nā Emma Scheltema ngā pikitia



Mō ngā tamariki pākiki

Ngā Ihirangi

Te wai me tōku tinana	5
Te huringa wai	6
Ngā Mātāpuna wai	8
Te whakapai i te wai hei inu	10
Te whakapai i te wai o te awa	12
Te pūnaha wai	14
Te wai ki roto i te kāinga	16
He Kuputaka	20

na oia: no na
ingoa. Me hae
ki te rapu
mātāpuna c
Māori

Nā taku pukumahi i tēnei āta kua tino mātewai au. Kei te tino hiahia au ki tētahi karaehe inu wai māori...

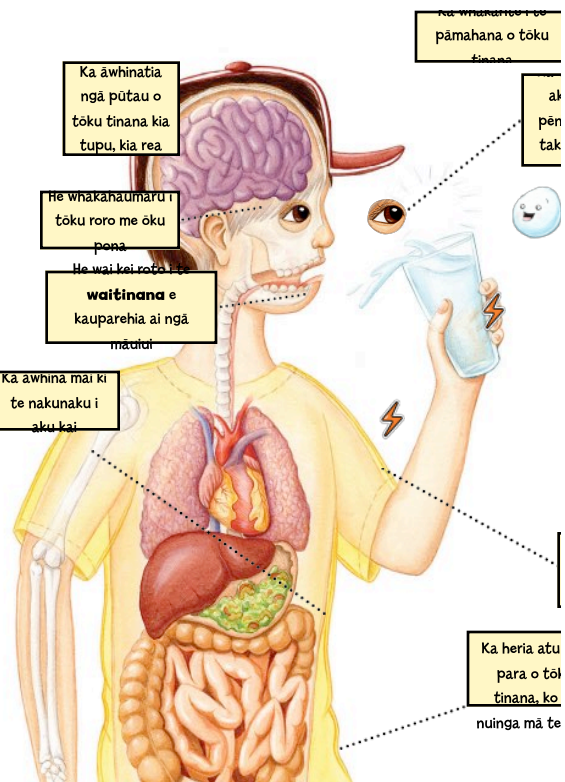


Ko wai koe? I ahu mai koe i hea?



Te wai me tōku tinana

E ora ai tōku tinana me whai wai. Ki te kore, ka hē te mahi o tōku tinana. Ko tōna nei 60% o tōku tinana, he wai. E ora ai, e harikoa e me inu au kia ono ngā karaehe wai māori i ia rā. Tirohia ngā mah te wai mōku...



Te huringa wai

Ehara i te mea he mutunga kore te wai i te ao, heoi e hurihuri haere ana i tētahi huringa mutunga kore, ka kīia tēnei, he huringa wai.



Mā te tōtātanga e waihangatia ai ngā kapua

Tōtā

Nā ngā hiri o te mamaoa hei wai ina mātao haere ia. Ka kīia tēnei he

Whakaetotanga

Hoake rā tāua ki runga!

Tōtāwairehu

anō, ka pirihiri rātau. Nā wai, ka taumaha rawa kia angitōnu, ā, ka taka mai ki te whenua hei **ua**, hei **ua whatu**, hei **waiwaha**, hei **hukarere**

ai te moana. Ka whakaeto te wai, ka huri mai i te we, ki te haurehu e kīia nei he **mamaoa**. Ka piki haere te wai ki te kōhauhau. Ka mahue

ehara i te mea e nui haere nei ngā mea katoa, e iti haere nei ko koe. Nā, he rite tāhi o tāua

He aha e nui haere nei ngā mea katoa?

Ko Rere ahau! Kua roa taku haere kia tae mai ki tō katiwai. Hara mai tāua, ka whakaatu ki a koe.

Ka ngote ngā tipu i **te wai mai i te whenua** mā ngā pakiaka, ā, ka **tuku wai** mā ngā rau.

Ka ahu mai te wai i te huringa wai, ā, ka ora ngā mea katoa i te wai nei.

Kei te mohio au ka hurihuri haere te wai i tētahi huringa mutunga kore. Engari, ka ahu mai taku wai māori i hea?

Ngā Mātāpuna wai

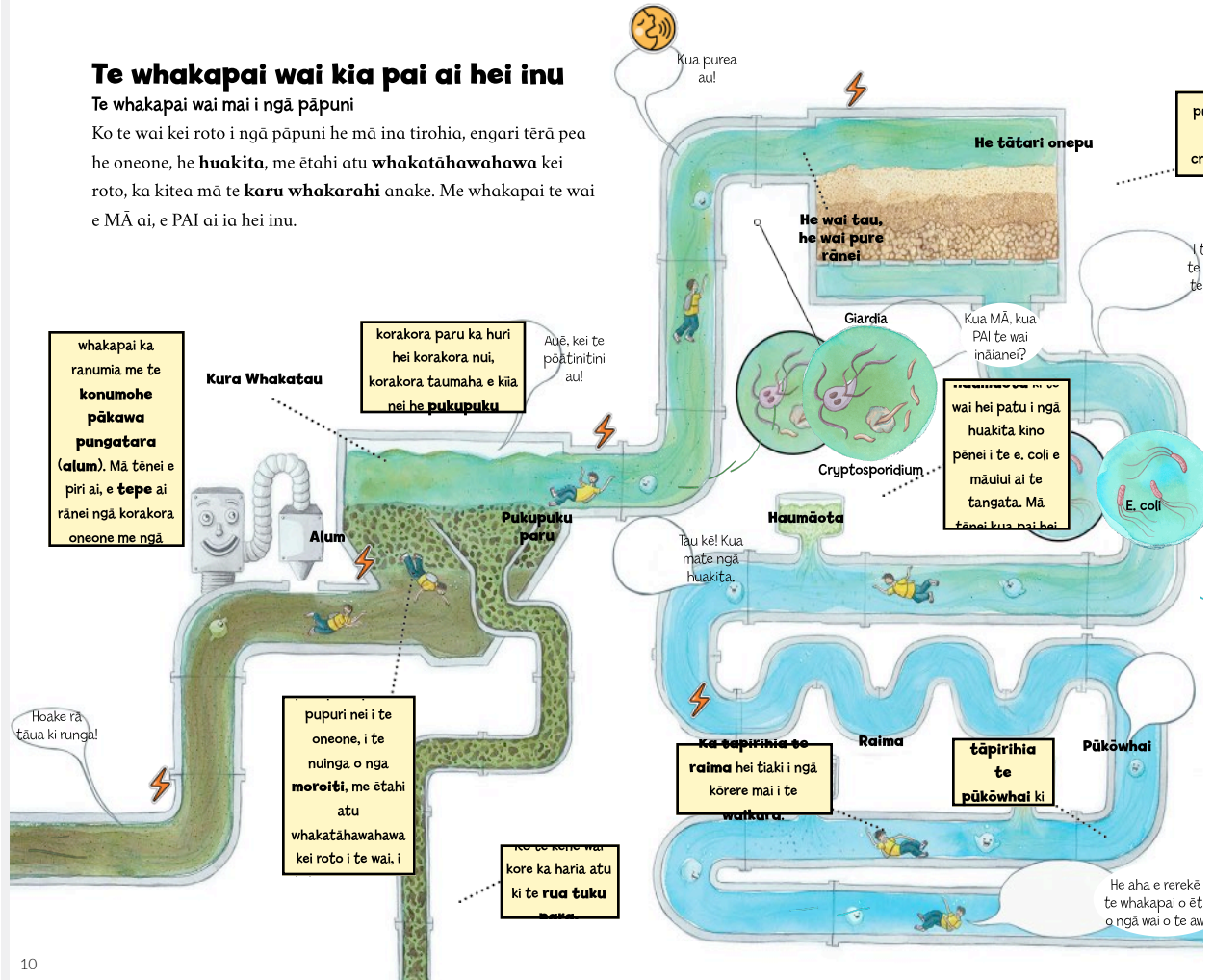
He nui ngā tāone i ahu mai ai ō rātau wai i ngā pāpuni penapena wai. Ko te wai i ngā pāpuni i ahu mai i te ua e whāngai ana i ngā manga me ngā awa iti. E tū ana ngā pāpuni nei ki ngā wāhi tiketike atu i te moana, ā, e rua nei ōna painga: he nui kē atu te ua i tērā o ngā raorao, ā, mā te **tō ā-papa** e rere kau ake ai te wai ki ngā tāone.



Te whakapai wai kia pai ai hei inu

Te whakapai wai mai i ngā pāpuni

Ko te wai kei roto i ngā pāpuni he mā ina tirohia, engari tērā pea he oneone, he huakita, me ētahi atu whakatāhawahawa kei roto, ka kitea mā te karu whakarahi anake. Me whakapai te wai e MĀ ai, e PAI ai ia hei inu.

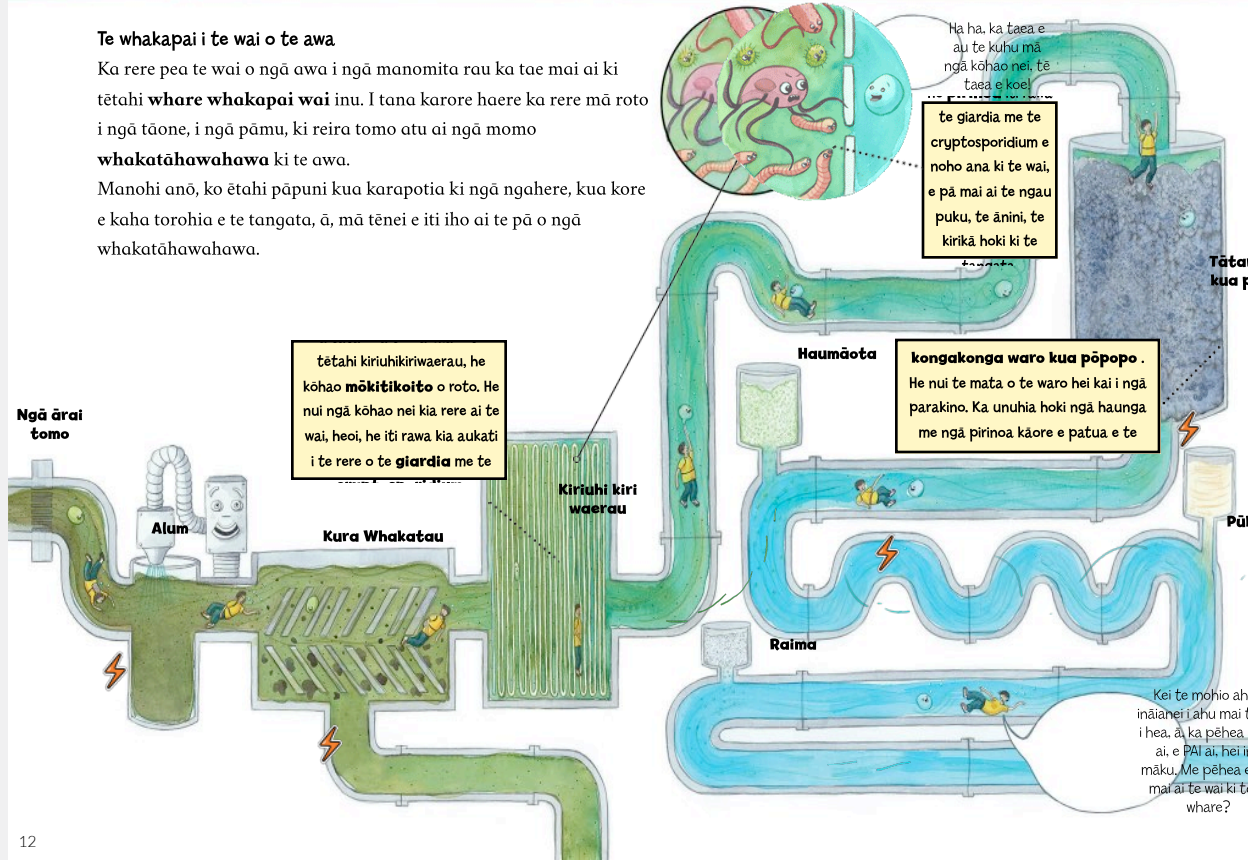




Te whakapai i te wai o te awa

Ka rere pea te wai o ngā awa i ngā manomita rau ka tae mai ai ki tētahi **whare whakapai wai** inu. I tana karore haere ka rere mā roto i ngā tāone, i ngā pāmu, ki reira tomo atu ai ngā momo **whakatāhawahawa** ki te awa.

Manohi anō, ko ētahi pāpuni kua karapotia ki ngā ngahere, kua kore e kaha torohia e te tangata, ā, mā tēnei e iti iho ai te pā o ngā whakatāhawahawa.



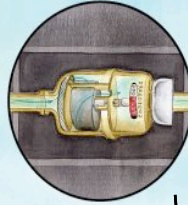
Te pūnaha wai

He mea hanga e ngā Rōmana o nehengā arawai hei kawae mai i te wai i ngā mātāpuna pāmamao ki ō rātou tāone. Ka paku rōnaki ngā arawai nei i ngā puke, e rere ai te wai mā te **tō ā-papa**. I tēnei ra, mā te tō ā-papa e rere pai ai te wai i ngā whare whakapai wai ki ngā kāinga, ki ngā toa, ki ngā wheketere me ngā kura.

He rawe te noho tahi ki konēi me ōku hoakatoa!



Kurawai



whare, ki te toa, ki te wheketere, ki te kura rānei, ka haere mā tētahi **ine wai**. Kia rere te wai mā te ine, ka huri tētahi **kōkeke** kua hono ki tētahi **mataine tau**. Mā te mataine e whakaine te nui o te wai ka

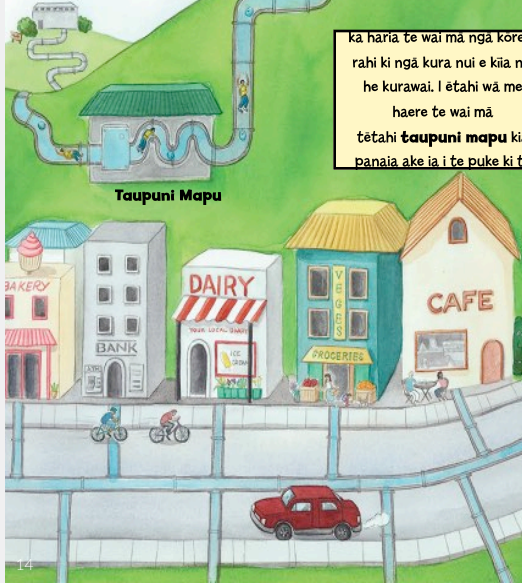
haria te wai mā roto i ngā kōreke iti iho ki ngā whare, ki ngā toa, ki ngā wheketere me

ka haria te wai mā ngā kōreke rahi ki ngā kura nui e kīia nei he kurawai. I ētahi wā me haere te wai mā tētahi **taupuni mapu** kia panaia ake ia i te puke ki te

Ka pēhea e mehio ai te tangata i te rahi o te wai ka whakamahia e tōku whānau?

Me pēhea e tae mai ai te wai ki taku kātawai?

Taupuni Mapu

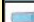




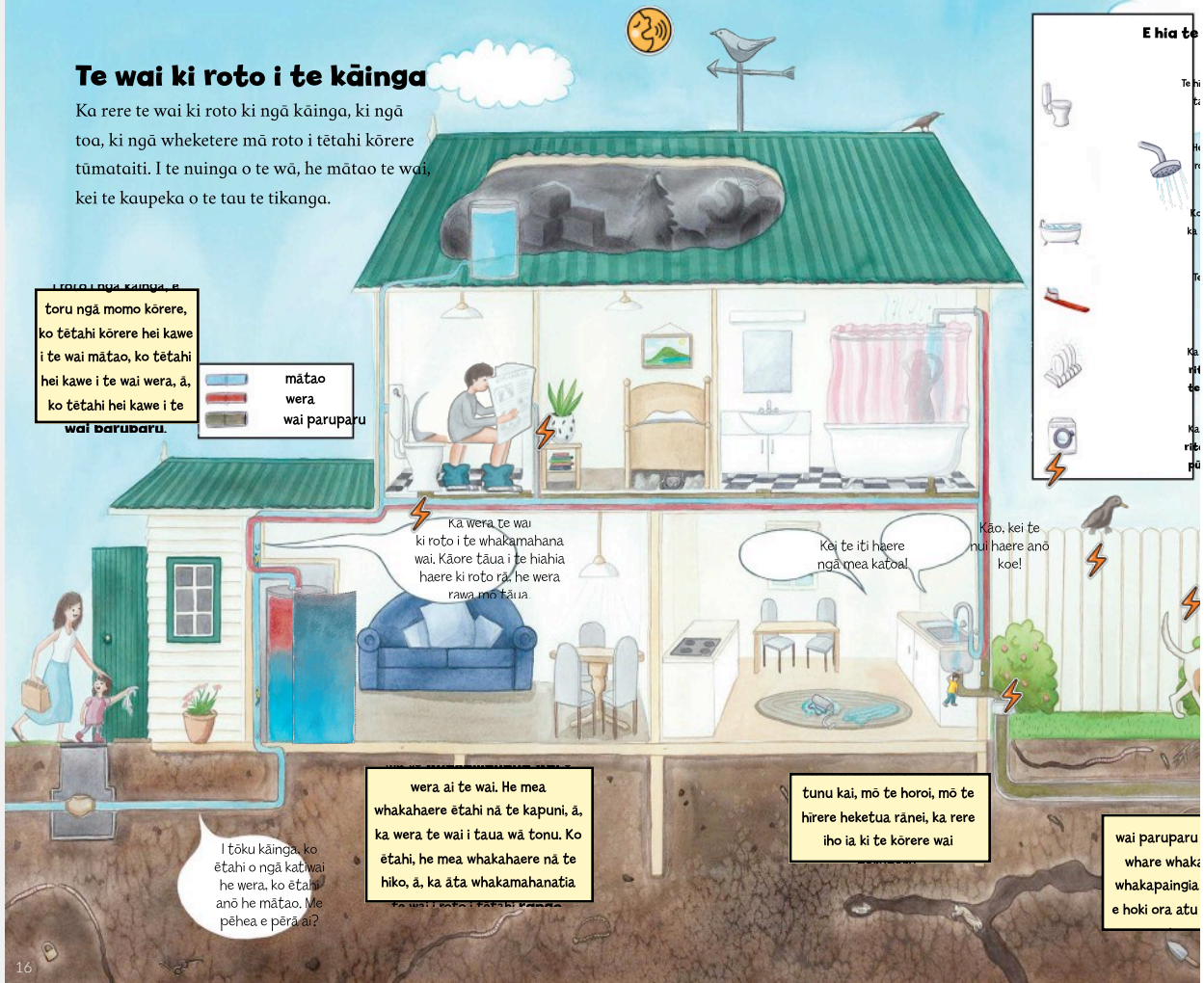
Ko te kaipānui ine he tangata ka titiro atu ki te ine me te tuhi i ngā tau. I reira he ngāwari noa iho te whakaine i te nui o te wai kua pau i ia whānau.

Te wai ki roto i te kāinga

Ka rere te wai ki roto ki ngā kāinga, ki ngā toa, ki ngā wheketere mā roto i tētahi kōrere tūmataiti. I te nuinga o te wā, he mātao te wai, kei te kaupeka o te tau te tikanga.

I roto i ngā kāinga, e toru ngā momo kōrere, ko tētahi kōrere hei kawē i te wai mātao, ko tētahi hei kawē i te wai wera, ā, ko tētahi hei kawē i te wai paruparu.

-  mātao
-  wera
-  wai paruparu



Ka wera te wai ki roto i te whakamahana wai. Kāore tāua i te hiahia haere ki roto rā, he wera rawa mō tāua.

Kāi te iti haere ngā mea katoa!

Kāo, kei te nui haere anō koe!

I tōku kāinga, ko ētahi o ngā kati wai he wera, ko ētahi anō he mātao. Me pēhea e pērā ai?

wera ai te wai. He mea whakahaere ētahi nā te kapuni, ā, ka wera te wai i taua wā tonu. Ko ētahi, he mea whakahaere nā te hiko, ā, ka āta whakamahana.

tunu kai, mō te horoi, mō te hirere heketua rānei, ka rere iho ia ki te kōrere wai

wai paruparu
whare whakapaingia
e hoki ora atu



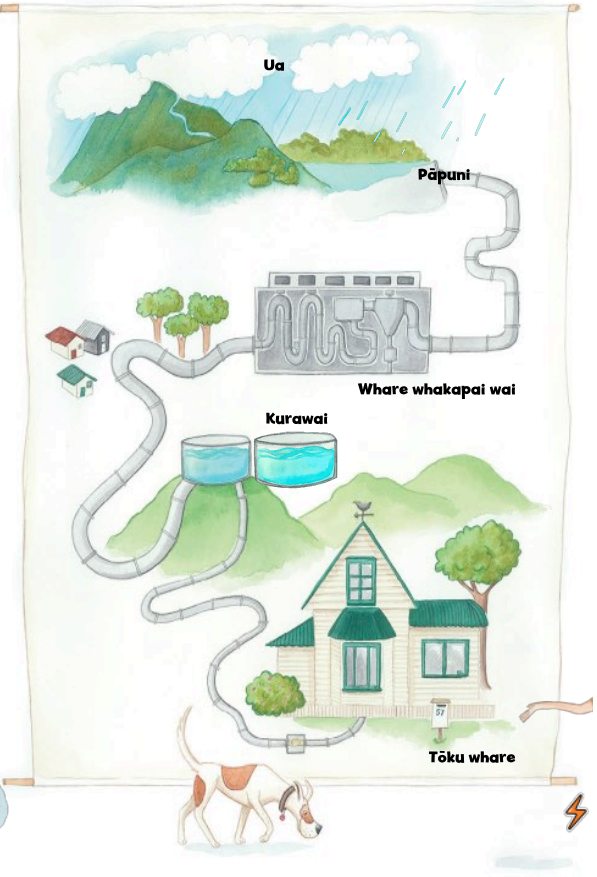
Miharo! Kātahi te kaewa waiwai whakamiharo. Nā, kua mōhio au kāore e taea te inu kau i tētahi wai, engari ko te wai MĀ, te wai PAI mai i taku katiwai. Kua rite au ki te inu i tētahi karaehe wai inaianei.



Ka ahatia te wai ka rere atu mā te kohao puoto?

Kāti, he kōrero anō tērā...

TE HAERENGA WAI



KUPUTAKA

Arawai - He hanga e rite nei ki te arawhi tōna āhua hei kawē wai mā tunga i tētahi ru.

Haumōta - He matū konganuku kore ka kitea e noho tāhanga ana, hei warehu taumaha māōta, he haunga hoki. Ka whakamāhia he whakakōmā, he patu huakita hoki i ngā puna kaukau.

Huakita - He rauropi pūtātahi i rawa ka kitea i ngā wahi katoa (te hau, te oneone, te kiri). He nui ngā huakita e māuiui ai te tangata, heoi, arā anō ētahi e ora ai te tangata.

Hukarere - He wai tō, mā, ngohengohe ka taka mai ki te papa i ngā wa o te makariri.

Inamata - He tino tawhito.

Ine wai - He taputapu hei whakaini i te nui o te wai ā-mita pūna nei, ka kuhu atu ki te whare, kura, whare kā ātu rānei mā roto i te kōrerē.

Karu Whakarahi - He taputapu tīro e kitea ai ngā mea mōkikōkito e kore e kitea e te karu noa iho.

Kene wai kore - He kene nā muri mai i tōna hurihanga i roto i tētahi pōrerē e unuhia ai te wai.

Kirituhi - He kiri, he paparanga rānei, he mea nō te tūao, he mea hanga e te tangata rānei.

Kongakonga waro kua pōpō - He matū koropungapunga ngote wai ka hangaia mā te whakawera i te matū pararopi (pēnei i te waro, rākau, me ngā anga kōkōmatū) me te kore hāu, kātahi ka kōpenupenuhia ka kongakonga.

Kōkeke - He porotiti e mau pāi nei ki tētahi rango, ka tākahuhuri.

Kura whakatao - He kura hei pupuri i ngā wē kia tau katoa ngā papatipu o roto ki te tākere.

Mamaoa - Ko te wai hei haurehu, e ahu mai ana i te wai kua whakaeto.

Manawa Whenua - He matūpuna wai nei roto i te papa e ki ai ngā matatiki me ngā puna.

Mataine - He utauta, he paraha, he porowhita tōna āhua. He tau, he tōhu rānei o runga e whakaaturia ai tētahi inenga, mā te pere i te uinga o te wā.

Matatiki - He papa kohatu keiraro i te whenua e pupuri ana i te wai. He kohatu e pupuri ana i te wai, he kohatu tukunoa. Ko te bikanga o tēnei, he puare o roto e rere noa ai te wē me te warehu mā roto. Ko ngā toka parataiao, pēnei i te hšanga, wahoko ko te onepū me te matakirikiri, he tauira o ngā kohatu pupuri wai.

Moroiti - He rauropi mōkikōkito e pā ai he mate.

Mōkikōkito - He mea iti rawa e kore e kitea ki te kore e whakamāhia he karu whakarahi.

Patu huakita - He tukanga e patua ai ngā moroiti, e aukatia ai rānei te tipu o ngā rauropi e tūpono mai ai he māuiui.

Pirinoa - He kararehe, he tipu rānei ka noho ki roto, ki runga rānei i tētahi atu kararehe, tipu rānei, ā, ka whāngaihia, ka tiakina rānei ia.

Pukupuku paru - He papatipu taumaha ake ka puta i te tepetanga.

Pūkōwhiri - He matū ka tāpēhia ki te wai mōro, ki te pēniho hoki i tētahi wā, kia ora ai ngā niho.

Raima - He matū mā, waiāhūa, kua hangaia ki te kongomā waiāhi, e iti iho ai te waikawa o te wai.

Rango - He āhua ahu toru e kitea nūtia ana i ia rā, pēnei i te kene hupa.

Rotu pupuri wai - He roto i hangaia e te tangata hei pupuri i ngā wai kua whakapāhia hei whakamāhi ki roto i ngā kainga, ngā pakihī rānei.

Rōmana - Te wai i noho i Rōma, he tōne nui kei te pokapō o Itāria.

Rua Tuku Para - He wāhi e tanunia ai te para ki roto i te whenua.

Taupuni mapu - He whare me ētahi pōrerē hei mapu wai mai i tētahi wāhi ki tētahi, Tātari - He mro e kuhu atu ai ngā wē kia whakawehea te wē i ngā korakora papatipu.

Tō ā-papa - Te tēpana whakamānea ki waenga i ngā papatipu katoa i te ao tukupō, ina koa, ko te whakamānea o te papatipu o te ao ki ngā mea e tata ana ki tōna mata. Ki te tahwhiti atu te mea i te papa, ka iti iho te tōpana tō ā-papa ka pā ki ia ia.

Tōtā - Ko tōtā te tukanga e panoni ai tētahi matū mai i te haurehu (mamaoa) ki te wē.

Tōtāwairehu - He wai ka taka mai ki te papa hei uia, hei hukarere, hei uia whātū, hei waiwaha rānei.

Tuku wai - Te mimiti o te wai mai i ngā wāhanga o te tipu, ina koa ngā rau, ngā tō, ngā puā, me ngā paikaka.

Ua - He wai ka māturuturu mai i ngā kapua i te rangi.

Ua whātū - He tōtāwairehu, he pōro iti, he puā rānei te āhua, kua hangaia ki ngā paparanga bio me te hukarere mātoforu.

Waerau - He rāpoi ngōta roa, nui rānei kua hangaia hei mekameka e tōatia ngā wāhanga. E hangaia ana mā te honohono matū o ngā rāpoi ngōta ōrite, hanga rite rānei e kōia nei he wātāhi.

Wai paruparu - He wai kua whakamāhia, ina koa mā te horo, he hiree heketua, i roto i tētahi tukanga mahi rānei, ā, i reira he para o roto.

Waikura - Te wāwāhi o tētahi matū, ina koa he konganuku, mā te matū tauhohe.

Waiūmana - He wē, kua tāta, tae kore, kei roto i ia ngā putau toto mā e tiakina ai te tōmana i ngā māuiui me ngā mate.

Waiwaha - He rānunga o te hukarere me te ua, wahoko ko ngā māturū ua ka tō i ia e taka ana i te rangi.

Whakaetoanga - Te tukanga e huri ai te wē hei haurehu.

Whakamāhana wai - He taputapu mō te kāinga, he whakamāhana kapuni, hiko rānei kei raro i tētahi kura e wera ai, e noho ai hoki te wai.

Whakapāpi - Kia āta rere mā roto i tētahi mea kōputaputa.

Whakatāhawahawa matū rāwaho, ā, ki te nui ka pā kino atu ki te ora o kararehe, ki te ora o te tī rānei.

Whakatape - Kia piri, i whakamātoforu rānei he papatipu.

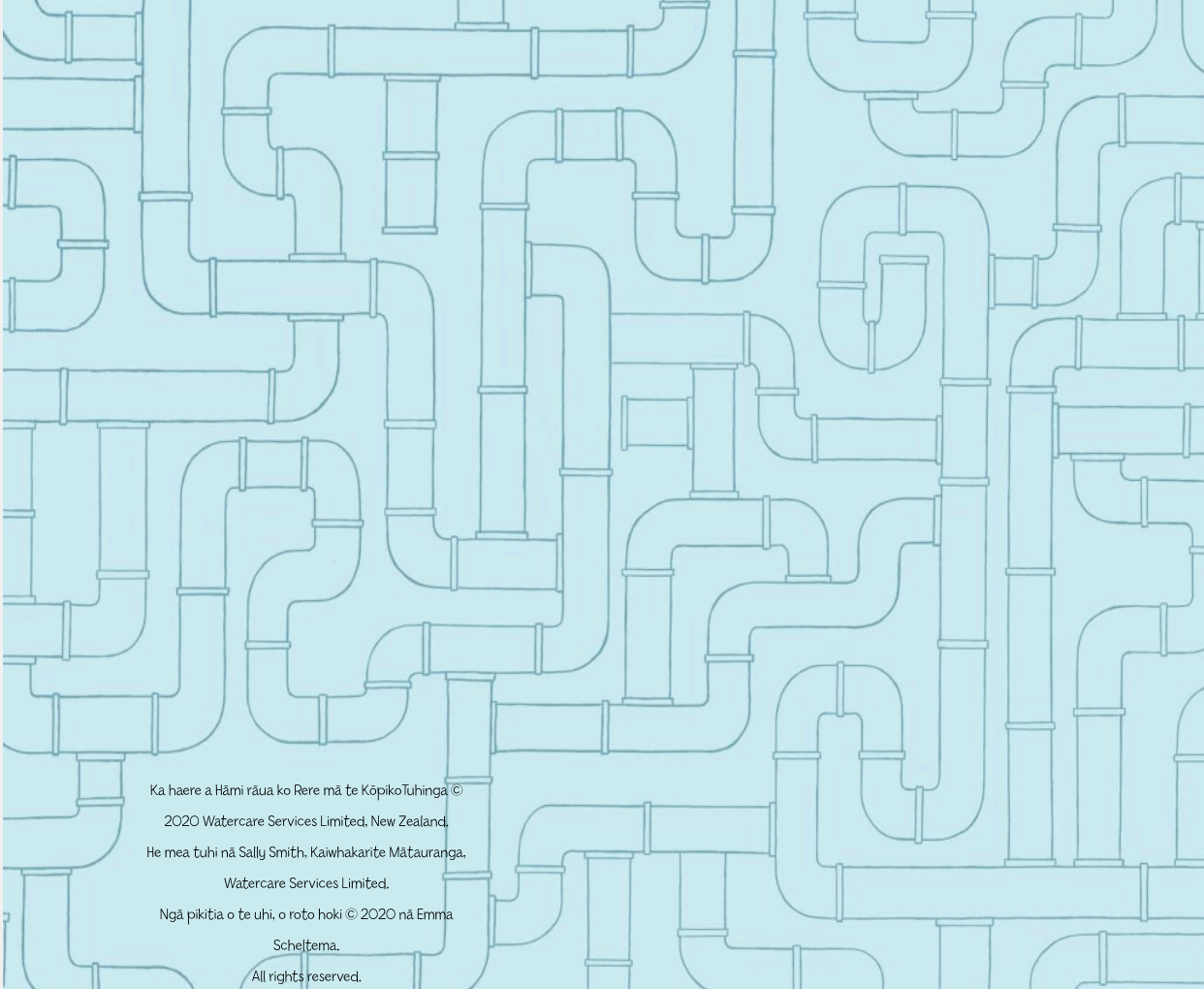
Whare whakapoi wai e whakapāhia ai te pāi ai, kia mā ai hei inu.

Alum/Konumoe Pāi Pungatara - He matū whakamāhia hei whakate ngā korakora kei roto i te rite ai ia ka inuma.

Cryptosporidium - He pirinoa mōkikōkito e pā a pokenga ki ngā kōpiro, m āha ka tōkōko.

Ecoli - He huakita ka kit nūtia i ngā kōpiro o te tē me ngā kararehe, mā ēta mōro me pā ai te paitini k rawa.

Giardia - He pirinoa mōkikōkito e kitea ana i t katoa, heoi e kitea nūtia wāhi kāore i tika te tuku hamutu, kāore hoki i pāi t



Ka haere a Hāmi rāua ko Rere mā te KōpikoTuhinga ©
2020 Watercare Services Limited, New Zealand.
He mea tuhi nā Sally Smith, Kaiwhakarite Mātauranga,
Watercare Services Limited.
Ngā pikiāia o te uhi, o roto hoki © 2020 nā Emma
Scheltema.
All rights reserved.